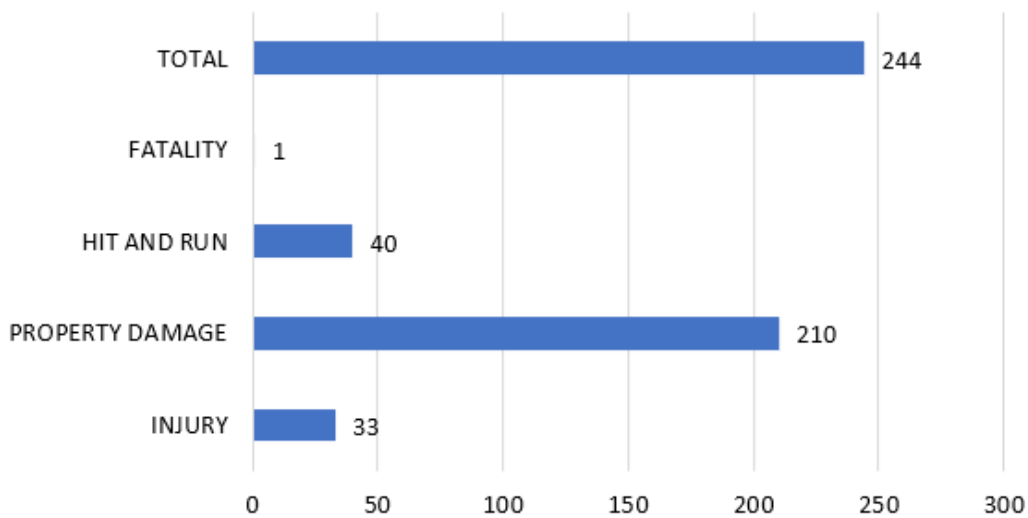




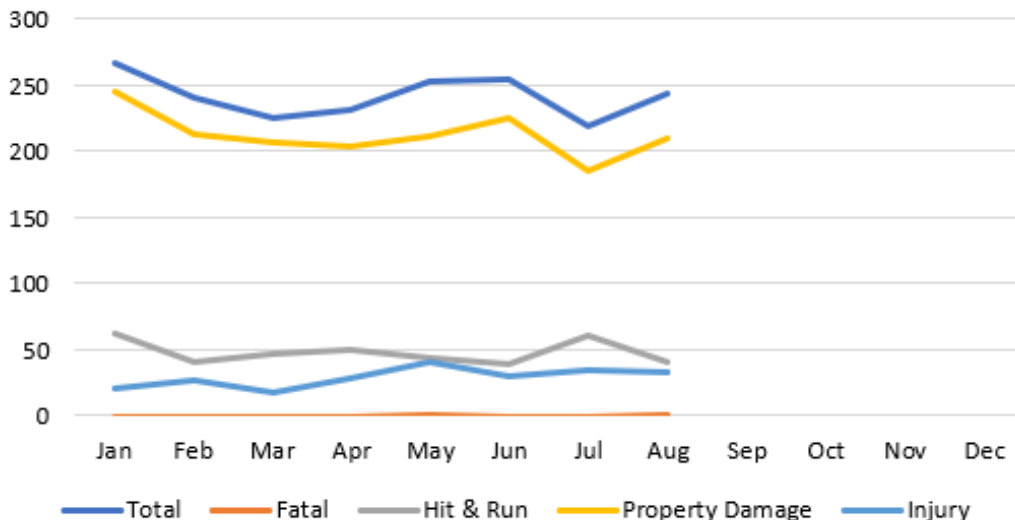
Traffic Safety Plan

Traffic complaints are the #1 complaint made to the Green Bay Police Department and City Alderpersons. The police department is committed to safe travels for motorists, pedestrians and bicyclists. With a goal of reducing traffic crashes, property damage, injury and death on Green Bay’s roadways, the police department will use a data driven approach for traffic enforcement. Data analytics from crash data, citizens complaints and speed boards will be used to identify traffic emphasis areas. Each month’s report will be posted on the police department’s website and will be presented at each months Traffic, Bicycle and Pedestrian Commission meetings.

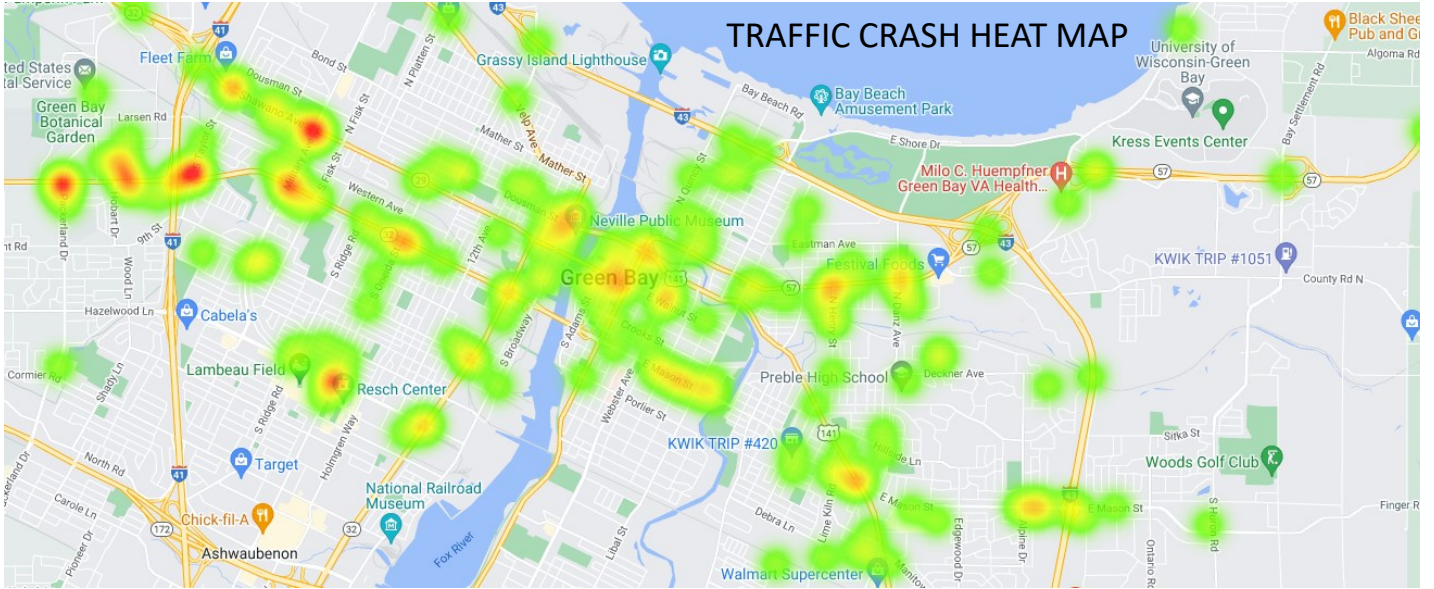
AUGUST 2022 CRASH DATA



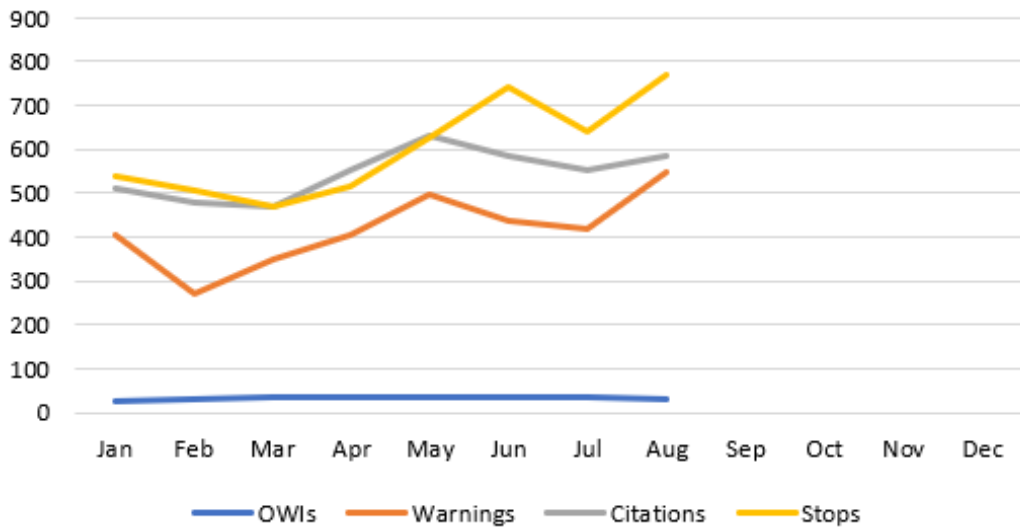
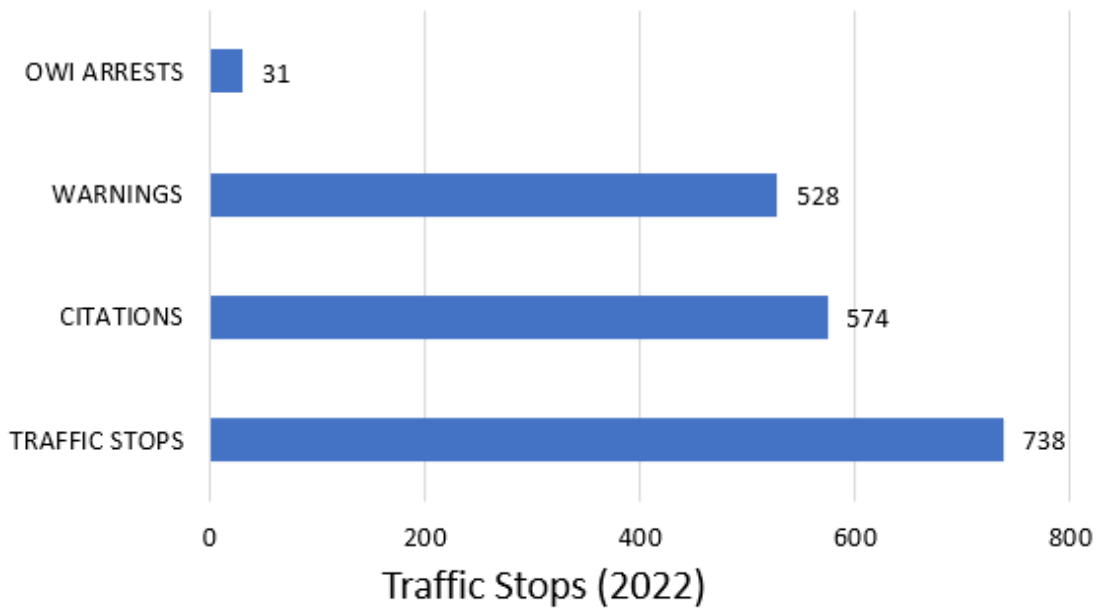
Crashes (2022)



GREEN BAY POLICE DEPARTMENT TRAFFIC SAFETY PLAN



AUGUST 2022 TRAFFIC STOPS

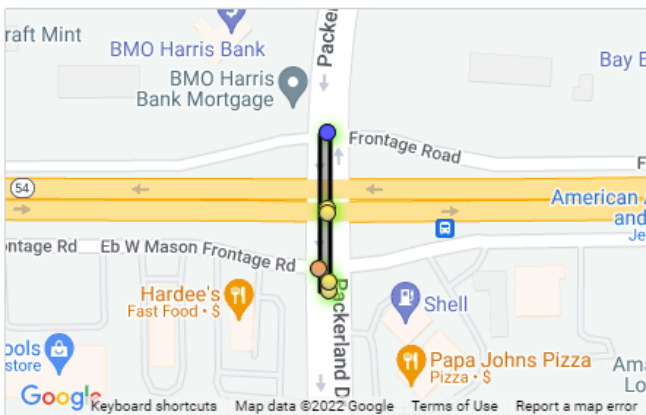


GREEN BAY POLICE DEPARTMENT TRAFFIC SAFETY PLAN

UPCOMING TRAFFIC TASK FORCE DEPLOYMENTS

- * BROWN COUNTY OWI TASK FORCE— SEPTEMBER 2, 3, 4
- * CLICK IT OR TICKET SEATBELT ENFORCEMENT— SEPTEMBER 1, 7, 14, 21
- * LOCAL ALCOHOL ENFORCEMENT—SEPTEMBER 17, 22

ENFORCEMENT PRIORITY AREAS

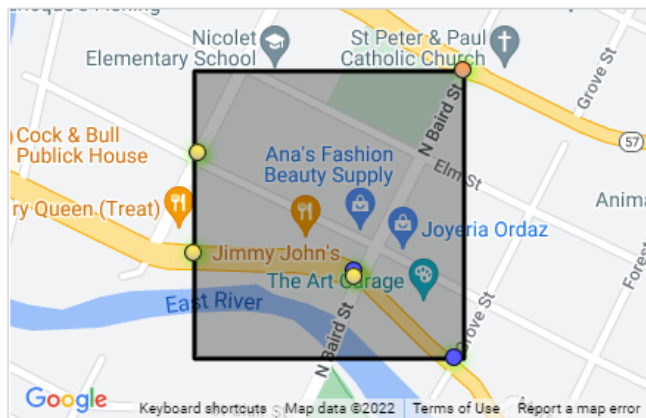


Analysis Area #1: GREEN BAY (C)

Total Crashes: 6

Contributing Factors:

- Teen Driver (3)
- Motorcycle (1)
- 65+ Driver (1)

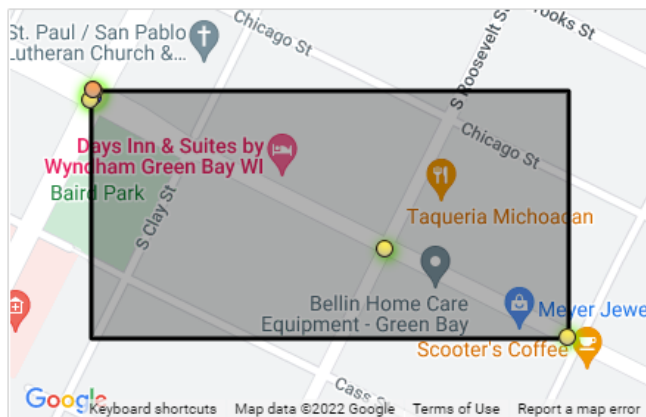


Analysis Area #2: GREEN BAY (C)

Total Crashes: 6

Contributing Factors:

- Teen Driver (2)
- CMV (1)
- Pedestrian (1)
- Speed (1)
- 65+ Driver (1)



Analysis Area #3: GREEN BAY (C)

Total Crashes: 6

Contributing Factors:

- Aggressive (1)
- Bike (1)
- Distracted (1)
- Impaired (1)
- Motorcycle (1)
- Occp Protection (1)
- Pedestrian (1)
- Speed (1)

GREEN BAY POLICE DEPARTMENT TRAFFIC SAFETY PLAN

TRAFFIC COMPLAINTS

District	Area	Complaint
D	2800 BLOCK MT MARY CIR	Reckless driving—Nissan Sentra
D	EAST SHORE DR/ALABAMA	Speeding on East Shore Dr between Danz Av and Alabama Av
C	1400 KURTZ AB	Speeding
A	200 S FISK ST	Speeding—between Shawano Av & Western Av
D	2400 SYCAMORE DR	Speeding - on Sycamore Dr
B	1100 14th AV	Speeding—NB from 9th ST, morning & evening hours
D	1500 FARLIN AV	Speeding— near park entrance and railroad tracks
A	1200 S TAYLOR ST	Since road reopened—speeding
A	BOND ST/STEVEN ST	Speeding on newly resurfaced road
C	1200 S MONROE AV	Speeding—vehicles not stopping for pedestrians
C	600 E WALNUT ST	Speeding—orange Mustang
A	1700 BOLAND RD	Speeding
D	300 WESLEY AV	Speeding
A	1100 N LOCUST ST	Speeding— mostly between Bond and Velp
A	CORMIER RD/SOUTHPOINT	Stop sign violations—not stopping
B	500 W WALNUT ST	Loud music/bass from vehicles from Kwik Trip parking lot
A	S FISK ST/7TH ST	Speeding—all hours
D	800 EDGEWOOD DR	Speeding—both directions

SPEED BOARD DATA

Location	Average vehicles per hour	Compliant (speed limit)	Low Risk (1-9 over)	Medium Risk (10-19 over)	High Risk (20+ over)
Dousman St @ Greenwood EB	100	6	90	4	0
Webster Av/Crooks SB	164	12	140	12	0
Ashland Av/Waverly NB	266	20	210	35	1
Southpoint @ Park-wood SB	52	1	46	5	0
2700 Block Nicolet Dr SB	52	7	44	1	0
1200 S Taylor St	106	7	93	7	0
Fisk St/7th St SB	81	6	73	2	0
1500 Block Farlin Av WB	5	1	4	0	0