



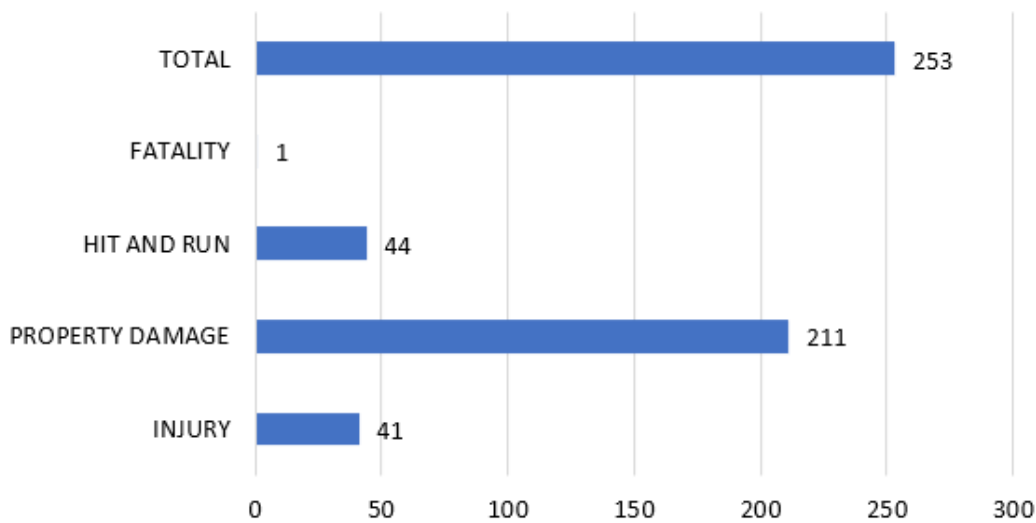
Green Bay Police Department

JUNE 2022

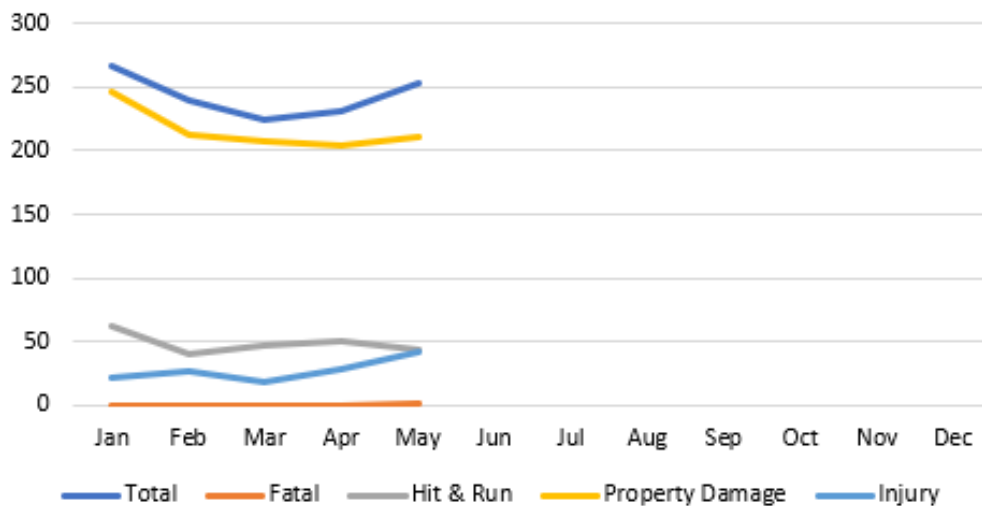
Traffic Safety Plan

Traffic complaints are the #1 complaint made to the Green Bay Police Department and City Alderpersons. The police department is committed to safe travels for motorists, pedestrians and bicyclists. With a goal of reducing traffic crashes, property damage, injury and death on Green Bay’s roadways, the police department will use a data driven approach for traffic enforcement. Data analytics from crash data, citizens complaints and speed boards will be used to identify traffic emphasis areas. Each month’s report will be posted on the police department’s website and will be presented at each months Traffic, Bicycle and Pedestrian Commission meetings.

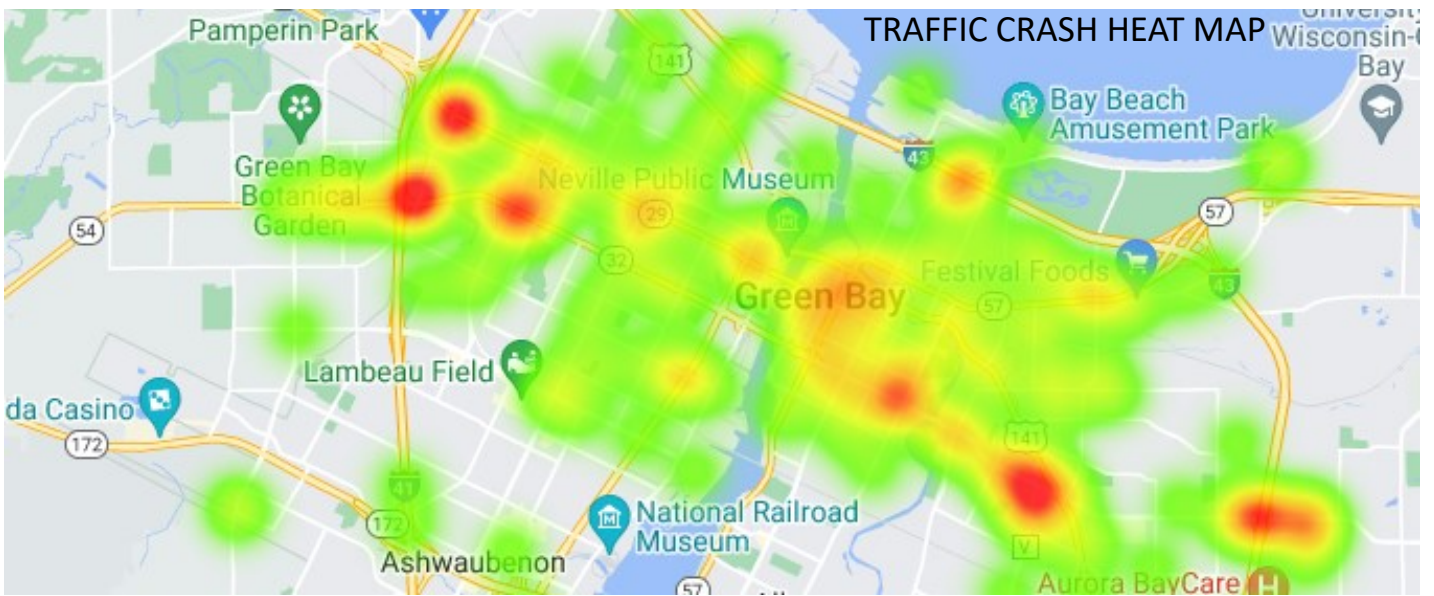
MAY 2022 CRASH DATA



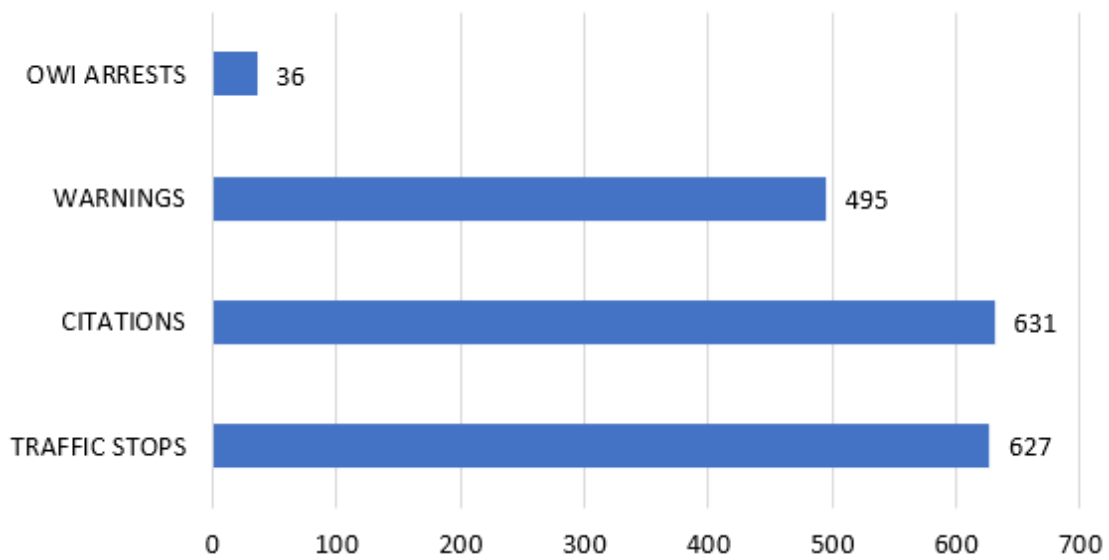
Crashes (2022)



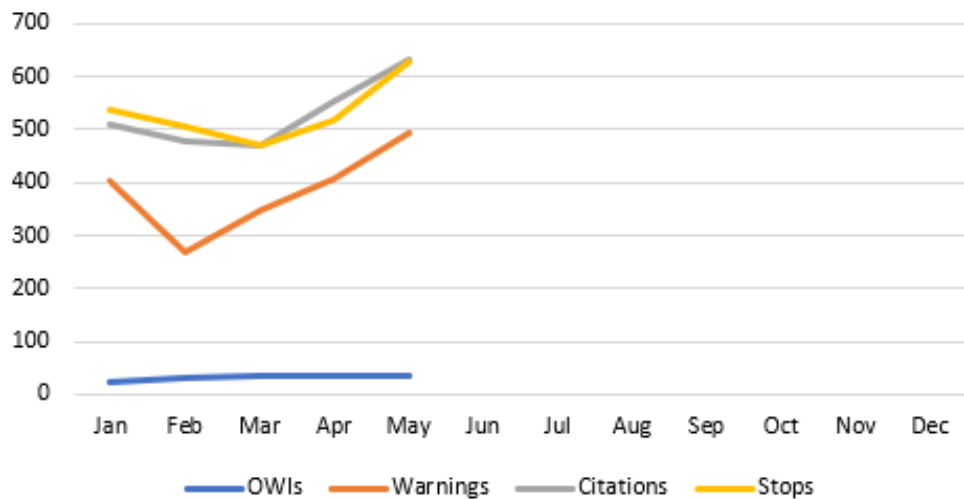
GREEN BAY POLICE DEPARTMENT TRAFFIC SAFETY PLAN



MAY 2022 TRAFFIC STOPS



Traffic Stops (2022)

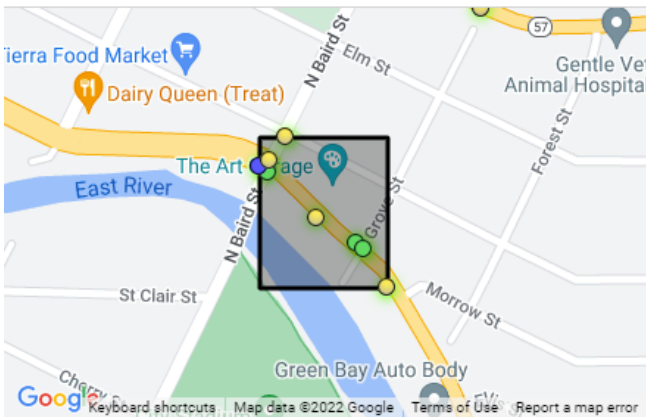


GREEN BAY POLICE DEPARTMENT TRAFFIC SAFETY PLAN

UPCOMING TRAFFIC TASK FORCE DEPLOYMENTS

- * BROWN COUNTY OWI TASK FORCE— JUNE 2, 3, 25
- * CLICK IT OR TICKET SEATBELT ENFORCEMENT— JUNE 8, 17, 21
- * LOCAL ALCOHOL ENFORCEMENT—JUNE 10, 11, 17, 18, 24
- * SPEED TASK FORCE— JUNE 10, 11, 15, 18, 20, 23, 24, 29

ENFORCEMENT PRIORITY AREAS

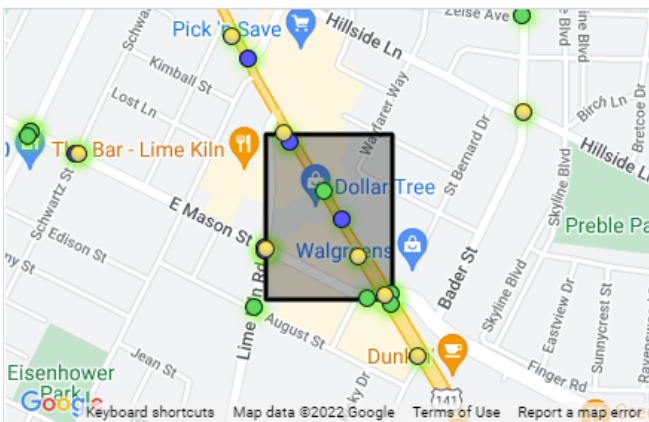


Analysis Area #1: GREEN BAY (C)

Total Crashes: 8

Contributing Factors:

- 65+ Driver (2)
- CMV (1)
- Distracted (1)
- Impaired (1)
- Motorcycle (1)
- Occp Protection (1)
- Speed (1)
- Teen Driver (1)

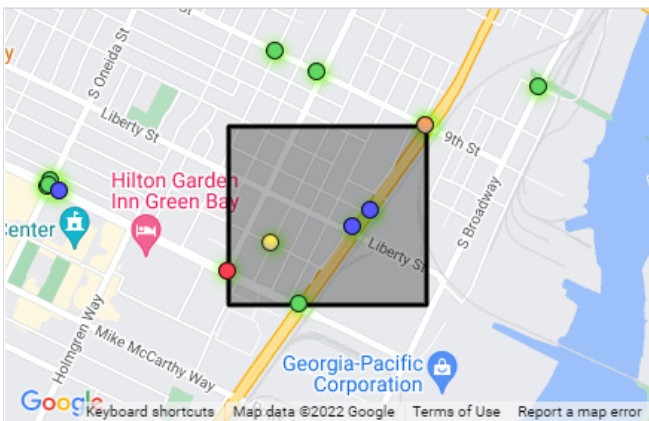


Analysis Area #2: GREEN BAY (C)

Total Crashes: 12

Contributing Factors:

- Teen Driver (3)
- 65+ Driver (3)
- Speed (2)
- Impaired (1)
- Motorcycle (1)



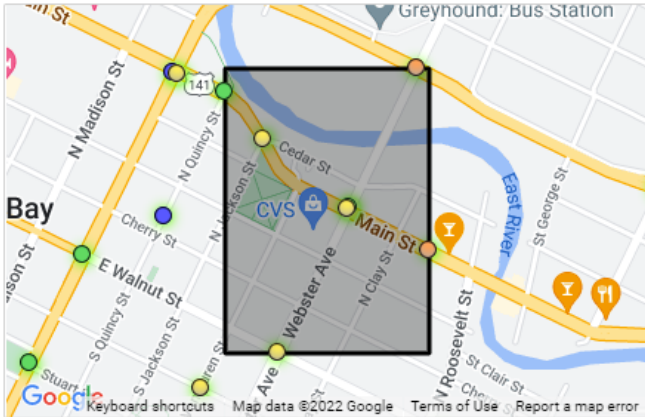
Analysis Area #3: GREEN BAY (C)

Total Crashes: 7

Contributing Factors:

- Impaired (2)
- Teen Driver (2)
- Distracted (1)
- Pedestrian (1)
- Speed (1)

GREEN BAY POLICE DEPARTMENT TRAFFIC SAFETY PLAN



Analysis Area #4: GREEN BAY (C)

Total Crashes: 7

Contributing Factors:

- CMV (2)
- Impaired (2)
- Motorcycle (2)
- Speed (2)
- Occp Protection (1)
- Pedestrian (1)
- Teen Driver (1)

TRAFFIC COMPLAINTS

District	Area	Complaint
A	N Locust St/Desnoyers St	Speeding between 8pm-12a
A	1500 Western Av	Loud exhaust on vehicle leaving parking lot around 5:30am
A	S Military Av/Lombardi Av	Drivers merging from Lombardi onto Military are not yielding
A	1700 Badger St	Speeding
A	Coral Ct/Rockdale St	Gray Mustang with loud exhaust revs engine 6:15-6:30am
B	S Ashland Av/Liberty St	Speeding
B	Velp Av/Neville	Speeding—0700-0900 weekdays and 10:30pm at night
B	Caroline St	Speeding
C	100 S Van Buren St	Black BMW consistently speeds down street—extremely loud exhaust
C	Baird St/ Grignon St	Car speeding
C	Emilie St/S Webster Av	Blue BMW drives recklessly/speeds
C	Adams St/Porlier St	Speeding at curve/dangerous for pedestrians crossing roadway
C	1400 Chicago St	Speeding
D	2700 Humboldt Rd	Speeding by I43 overpass and apartment buildings
D	1700 Eastman Av	Speeding
D	1700 Debra Ln	Speeding—high traffic flow due to roadwork on Bellevue St
D	Huron Rd/Humboldt	Racing cars Friday nights
D	Deckner Av/Main St	Vehicles with loud exhaust revving engines
D	200 Oak Grove Av	Car with no muffler—speeding
D	800 Edgewood Dr	Muscle cars speeding
D	1400 Alpine Dr	Speeding usually between 9pm-11pm
D	Erie Rd/Golf Dr	Gray Audi speeds daily 6:50am-7:05am, NB on Erie from Finger Rd
D	2600 Van Beek Rd	Cars purposefully take this route to speed up/down hill

GREEN BAY POLICE DEPARTMENT TRAFFIC SAFETY PLAN

Speed Board Data

Location	Average vehicles per hour	Compliant (speed limit)	Low Risk (1-9 over)	Medium Risk (10-19 over)	High Risk (20+ over)
200 N Taylor St NB	84	6	74	3	0
Hazelwood Ln/Eric St WB	44	2	38	5	0
1300 Western Av EB	56	4	49	3	0
800 block Mather St WB	60	11	48	1	0
200 block N Maple Av NB	4	1	3	0	0
14th/Biemeret St NB	5	1	4	0	0
Oneida/Hickory Hill SB	45	12	32	1	0
Alpine/Canyon Bluff	84	6	70	8	0
1500 Eastman Av	43	6	34	2	0
Huron Rd/Sitka SB	74	13	59	1	0