



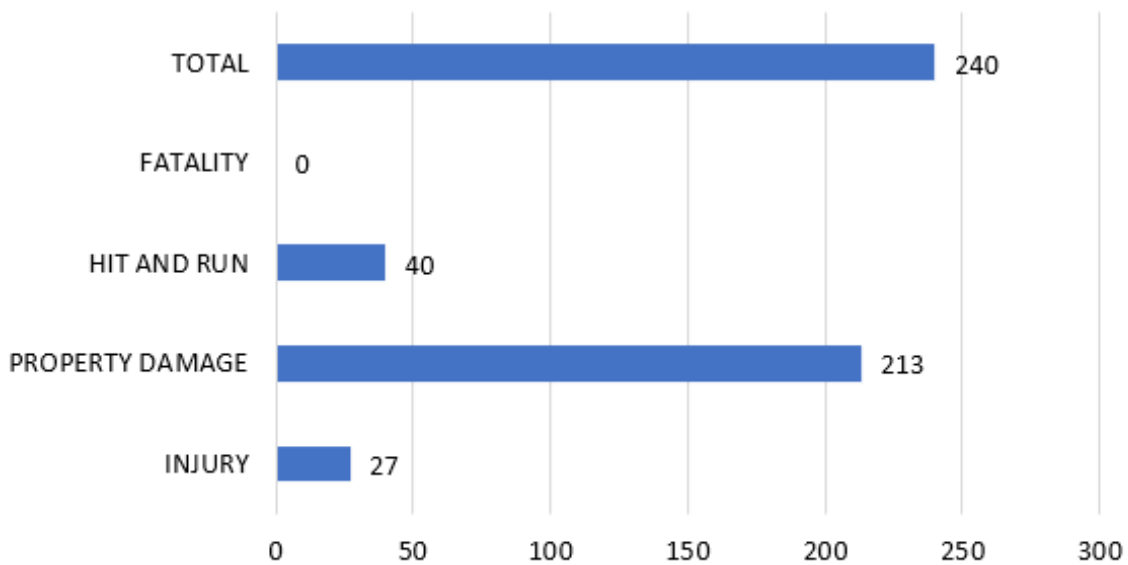
Green Bay Police Department

March 2022

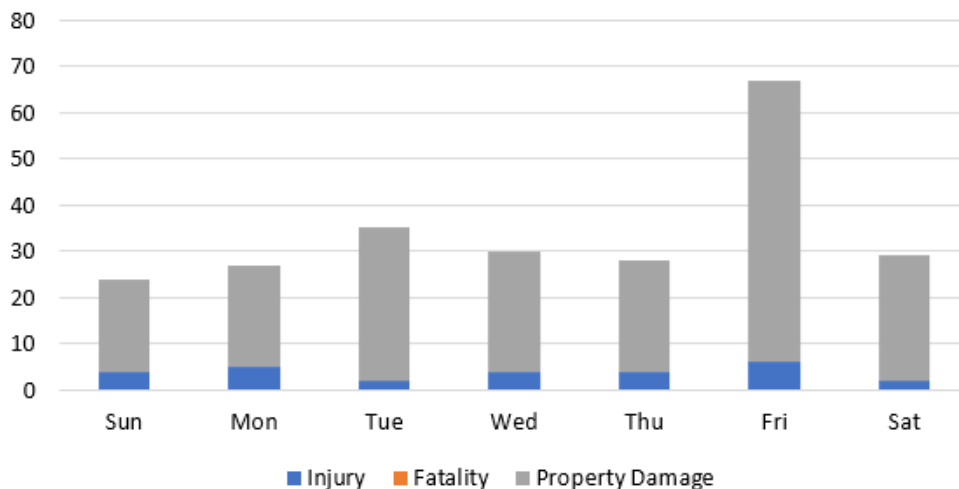
Traffic Safety Plan

Traffic complaints are the #1 complaint made to the Green Bay Police Department and City Alderpersons. The Police Department is committed to safe travels for motorists, pedestrians and bicyclists. With a goal of reducing traffic crashes , property damage, injury and death on Green Bay’s roadways, the Police department will use a data driven approach for traffic enforcement. Data analytics from crash data, citizens complaints and speed boards will be used to identify traffic emphasis areas. Each month’s report will be posted on the police department’s website and will be presented at each months Traffic, Bicycle and Pedestrian Commission meetings.

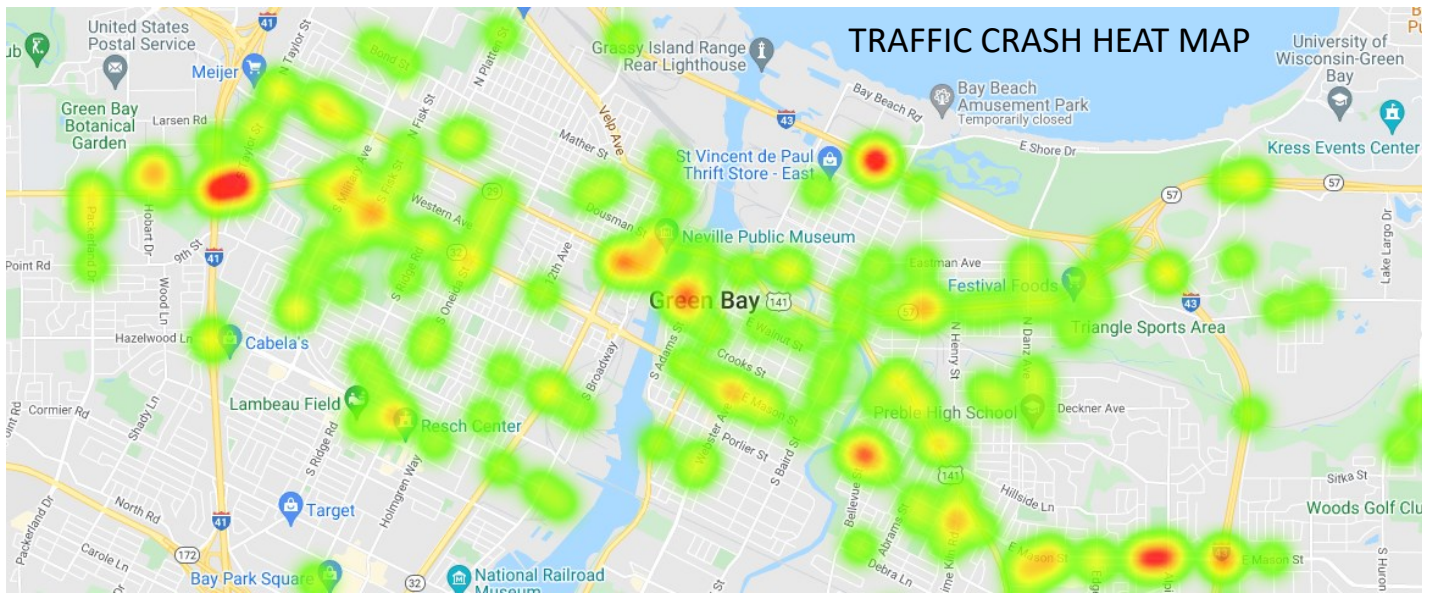
FEBRUARY 2022 CRASH DATA



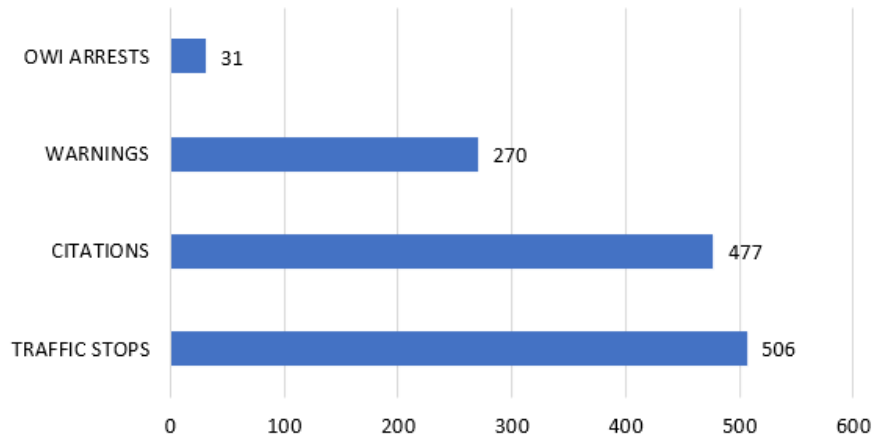
Accidents by days of the week



GREEN BAY POLICE DEPARTMENT TRAFFIC SAFETY PLAN



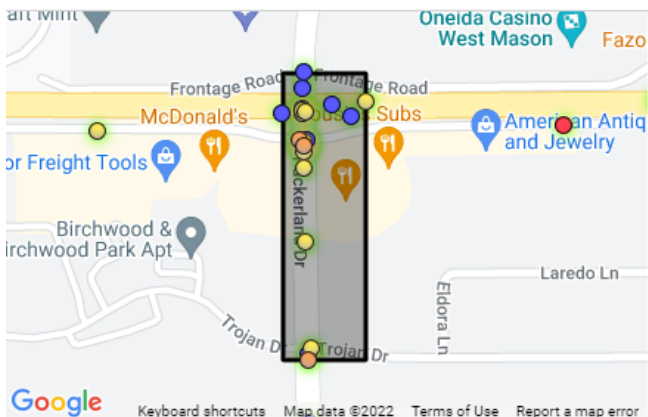
FEBRUARY TRAFFIC STOPS



UPCOMING TRAFFIC TASK FORCE DEPLOYMENTS

- * GREEN BAY OWI ENFORCMENT— MARCH 17TH (ST PATRICK’S DAY), 18, 19, & 26TH
- * CLICK IT OR TICKET SEATBELT ENFORCEMENT—MARCH 18 & 30TH

ENFORCEMENT PRIORITY AREAS



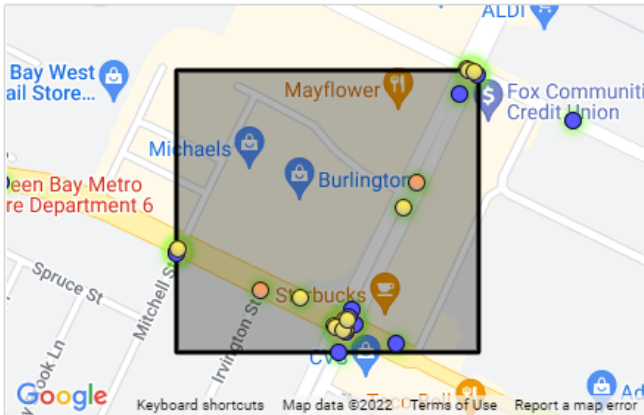
Analysis Area #1: GREEN BAY (C)

Total Crashes: 27

Contributing Factors:

- Teen Driver (11)
- 65+ Driver (5)
- Distracted (3)
- Motorcycle (2)
- Seat Belt (2)
- CMV (1)
- Pedestrian (1)

GREEN BAY POLICE DEPARTMENT TRAFFIC SAFETY PLAN

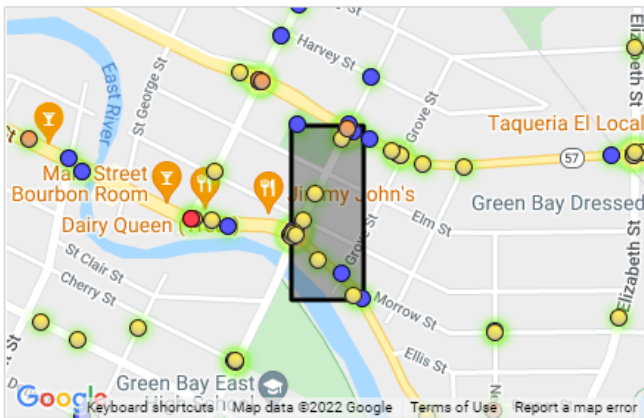


Analysis Area #2: GREEN BAY (C)

Total Crashes: 28

Contributing Factors:

- 65+ Driver (9)
- Speed (3)
- Teen Driver (5)
- Bike (2)
- Distracted (3)
- Motorcycle (2)
- Pedestrian (3)
- Alcohol (1)
- Seat Belt (3)



Analysis Area #3: GREEN BAY (C)

Total Crashes: 25

Contributing Factors:

- Teen Driver (6)
- Motorcycle (2)
- Speed (5)
- Bike (1)
- 65+ Driver (5)
- CMV (1)
- Seat Belt (3)
- Distracted (1)
- Alcohol (2)
- Drug (1)

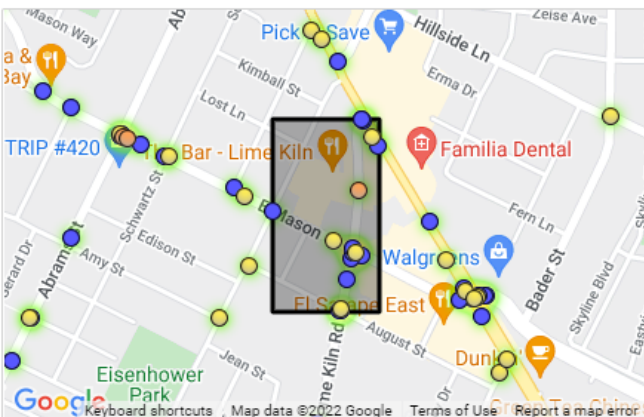


Analysis Area #4: GREEN BAY (C)

Total Crashes: 22

Contributing Factors:

- Seat Belt (6)
- Drug (2)
- 65+ Driver (5)
- Alcohol (1)
- Teen Driver (4)
- Bike (1)
- Distracted (3)
- CMV (1)
- Speed (3)
- Pedestrian (1)



Analysis Area #5: GREEN BAY (C)

Total Crashes: 21

Contributing Factors:

- Teen Driver (4)
- Seat Belt (2)
- Alcohol (3)
- Pedestrian (1)
- Distracted (3)
- Speed (1)
- 65+ Driver (3)
- Motorcycle (2)

GREEN BAY POLICE DEPARTMENT TRAFFIC SAFETY PLAN

Traffic Complaints

District	Area	Complaint
A	2700 Blk He Nis Ra Ln	Speeding
A	1205 S Taylor St	Speeding vehicles
A	Bond St/Steven St	Constant issue with speeders between Military Av & Taylor St
A	Southwest High School	Speeding in school zone
A/B	Gray St	Speeding on newly reconstructed roadway
B/C	Tilleman (Mason St) Bridge	Speeding—all times of day
C	Radisson St/N Quincy St	Vehicles not yielding to people in crosswalk by GB Packaging
D	2300 Blk Manitowoc Rd	Speeding vehicles between liquor store and ravine
D	1700 Blk Eastman Av	Speeding—all times of the day
D	Alpine Dr/Canyon Bluff Rd	Speeding 1030am-1pm is the worst
D	Juniper Dr	Speeding cars between Irene St and Abrams St

March Traffic Safety Advisory

Motorists speeding in school zones create a very dangerous environment for our children on their way to and from school.

Unfortunately, most people are heading to work at the same time kids are walking to school. Our officers make a priority to enforce the 15 mph speed limit in school zones! Remember, when you see this sign, and children are present in the school zone, the speed limit is 15 mph.

This does not mean 25 mph is okay! Speeding fines are much more expensive in school zones. Motorists can expect to pay as much as \$187 for this offense.

We thank you in advance for keeping our kids safe!

