



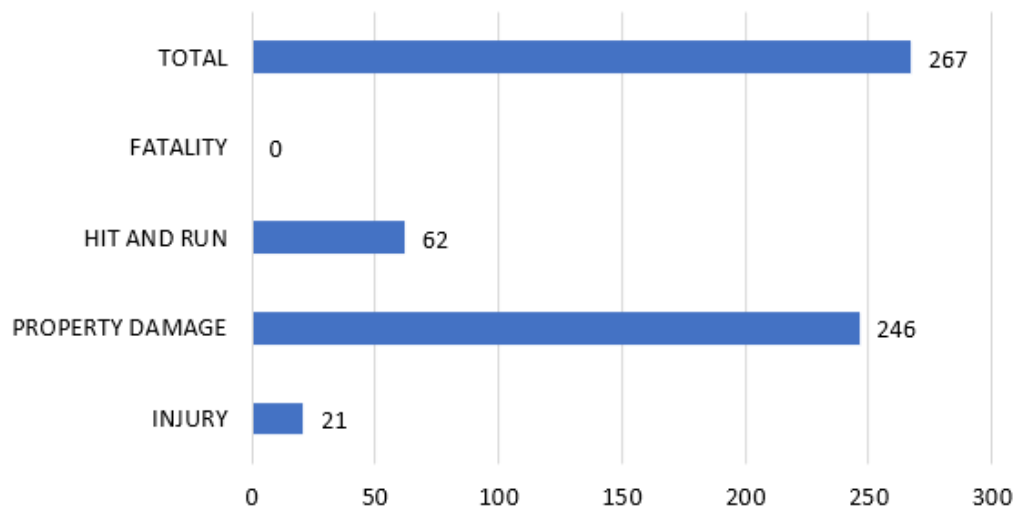
Green Bay Police Department

FEBRUARY 2022

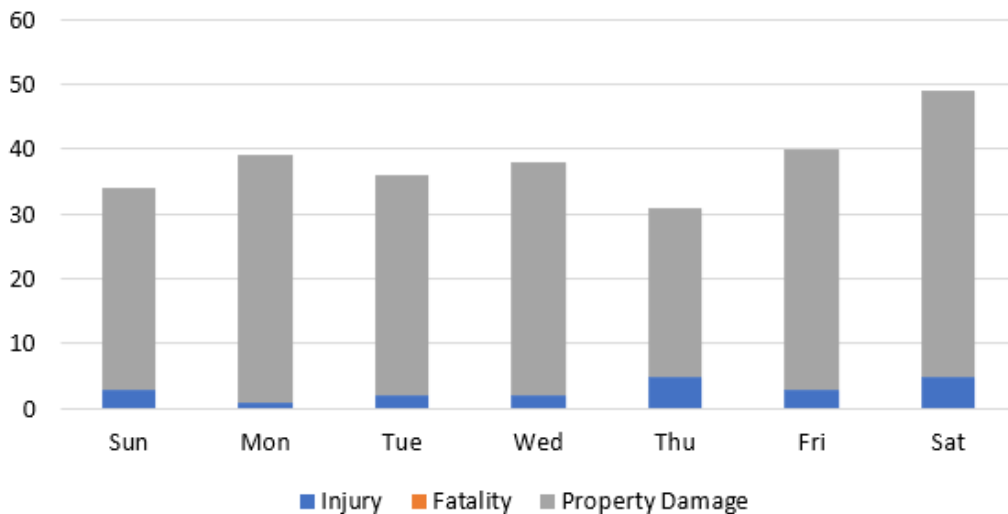
Traffic Safety Plan

Traffic complaints are the #1 complaint made to the Green Bay Police Department and City Alderpersons. The Police Department is committed to safe travels for motorists, pedestrians and bicyclists. With a goal of reducing traffic crashes , property damage, injury and death on Green Bay’s roadways, the Police department will use a data driven approach for traffic enforcement. Data analytics from crash data, citizens complaints and speed boards will be used to identify traffic emphasis areas. Each month’s report will be posted on the police department’s website and will be presented at each months Traffic, Bicycle and Pedestrian Commission meetings.

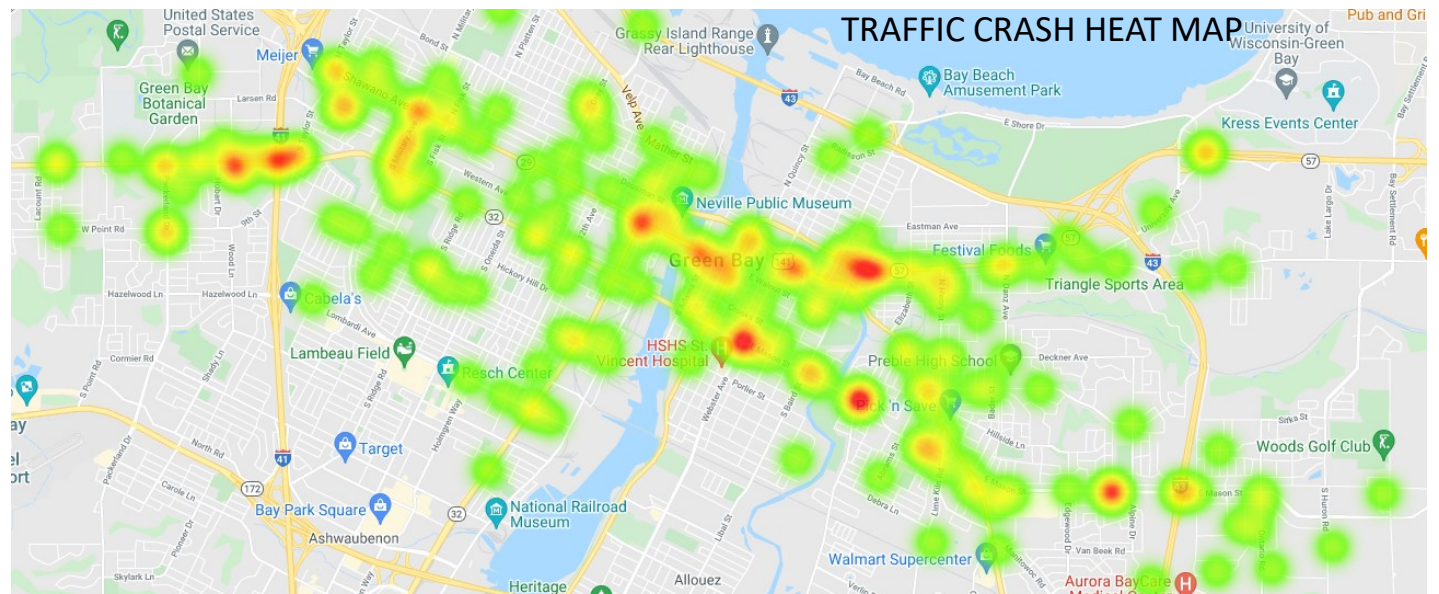
JANUARY 2022 CRASH DATA



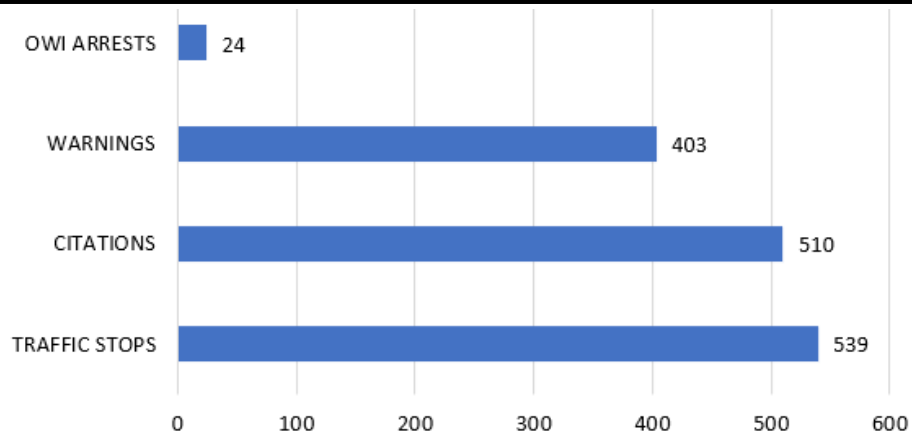
Accidents by days of the week



GREEN BAY POLICE DEPARTMENT TRAFFIC SAFETY PLAN



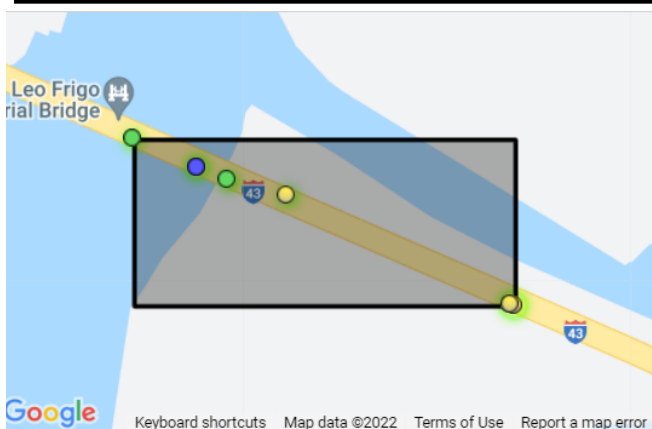
JANUARY 2022 TRAFFIC STOPS



UPCOMING TRAFFIC TASK FORCE DEPLOYMENTS

- * GREEN BAY OWI ENFORCMENT— FEBRUARY 4, 12, 19, 25
- * CLICK IT OR TICKET SEATBELT ENFORCEMENT—FEBRUARY 9, 17

ENFORCEMENT PRIORITY AREAS



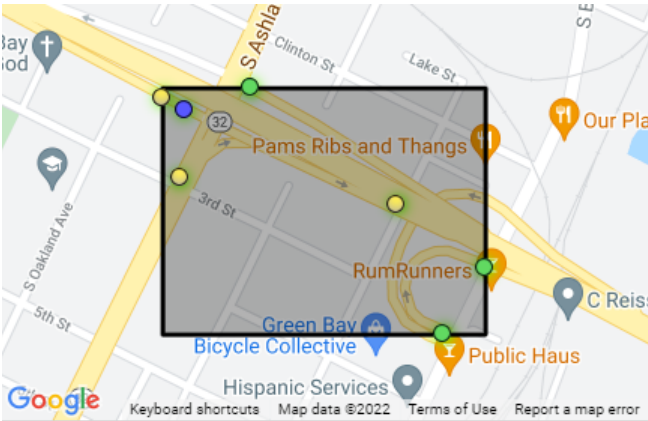
Analysis Area #1: GREEN BAY (C)

Total Crashes: 8

Contributing Factors:

- Speed (5)
- 65+ Driver (2)
- CMV (1)
- Distracted (1)
- Teen Driver (1)

GREEN BAY POLICE DEPARTMENT TRAFFIC SAFETY PLAN

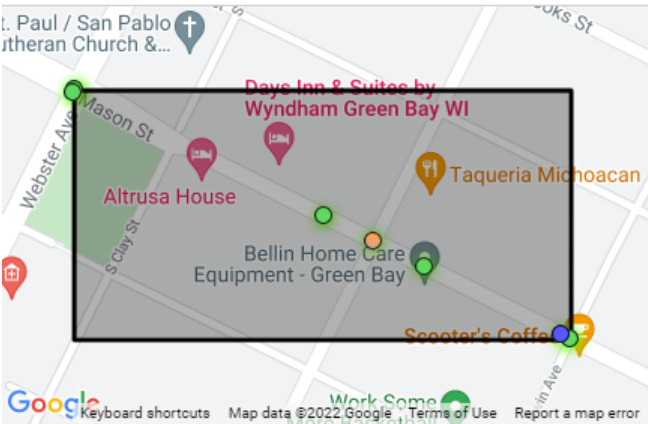


Analysis Area #2: GREEN BAY (C)

Total Crashes: 7

Contributing Factors:

- Alcohol (1)
- 65+ Driver (1)
- CMV (1)
- Distracted (1)
- Motorcycle (1)
- Teen Driver (1)

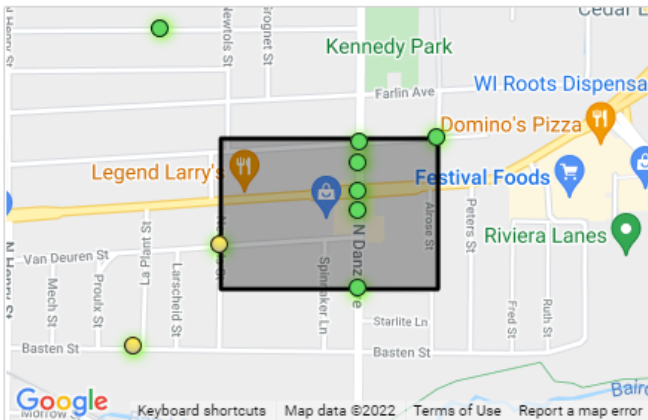


Analysis Area #3: GREEN BAY (C)

Total Crashes: 7

Contributing Factors:

- Teen Driver (3)
- Alcohol (2)
- 65+ Driver (1)

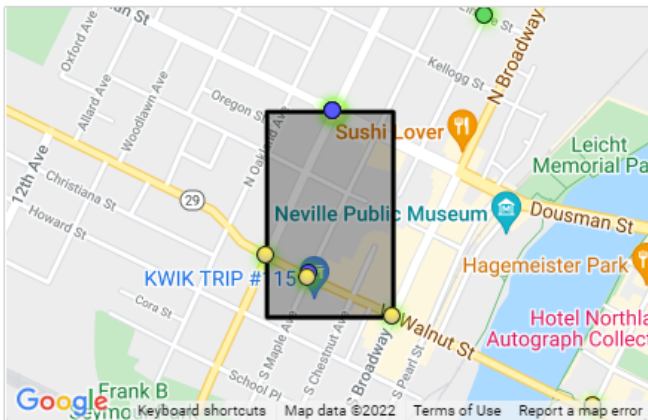


Analysis Area #4: GREEN BAY (C)

Total Crashes: 7

Contributing Factors:

- Seat Belt (2)
- CMV (1)
- Distracted (1)
- Speed (1)
- Teen Driver (1)



Analysis Area #5: GREEN BAY (C)

Total Crashes: 7

Contributing Factors:

- Pedestrian (2)
- Alcohol (1)
- 65+ Driver (1)

GREEN BAY POLICE DEPARTMENT TRAFFIC SAFETY PLAN

Traffic Complaints

District	Area	Complaint
A	1800 Wood Lane	Vehicle speeding between Shady Oak and Hazelwood
A	N Locust St/Dousman St	Speeding & stop sign violations—all times of the day
A	Southwest High School	Speeding in school zone
B	Ashland Av/W Mason St	Drivers failing to yield to the right of way on ramp on top of the ramp
B/C	Tilleman (Mason St) Bridge	Speeding—all times of day
C	800 block Radisson St	Vehicles not yielding to pedestrians in cross walk by GB Packaging
D	Deckner Av/Alpine	Preble students speeding to and from school

February Traffic Safety Advisory



This month’s advisory focusses on the safety of our children. The child restraint requirements in WI Statute 347.48(as) can be a bit complicated.

We’ve tried to simplify the law with the following breakdown.

- Child under 1 year old **or** weighs less than 20lbs, must be in a rear facing car seat, in the rear seat if the vehicle has a rear seat.
- Child older than 1 but less than 4 years old, weighs 20 to 40lbs (**or 4-8 years old weighing less than 40lbs**), can be in a forward facing car seat, but still in the rear seat if equipped.
- Child 4-8 years old, weighs at least 40lbs but less than 80lbs, and less than 57” tall, can be properly restrained in a booster seat.
- Child less than 8 years old, weighing more than 80lbs, or 57” tall, can be properly restrained in a safety belt (seat belt).
- Police can and will stop vehicles with unrestrained children. Fines for these offenses range from \$73.60 to \$98.80 in the City of Green Bay.

We hope this helps clarify the statute. Please buckle up our kids!